



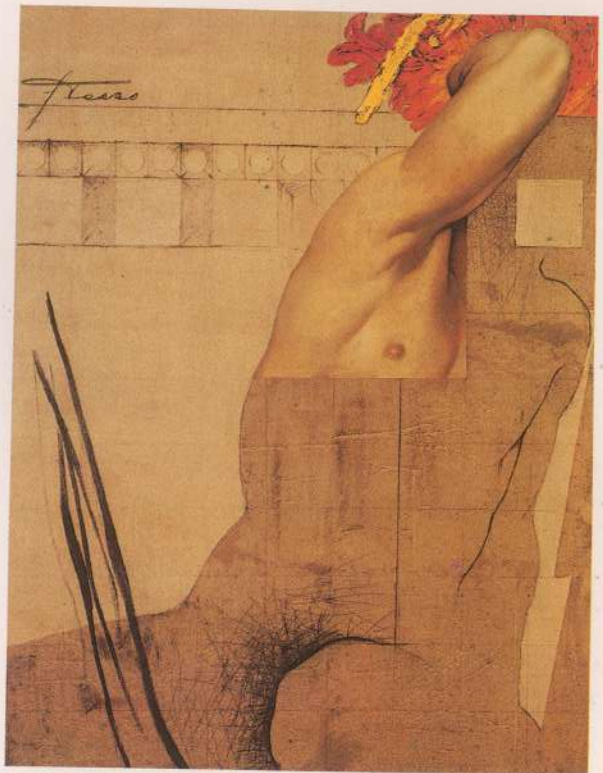
CRISTO SCORSESE 1988
145x114cm
Coleção Guilherme Haumci



ESTUDO Nº 5 1988
143x112cm
Coleção Luiz Eurico Klotz



SÃO JOSÉ 1988
100x89 cm
Coleção Particular



CARIÁTIDE 1988
100x81cm
Coleção Particular



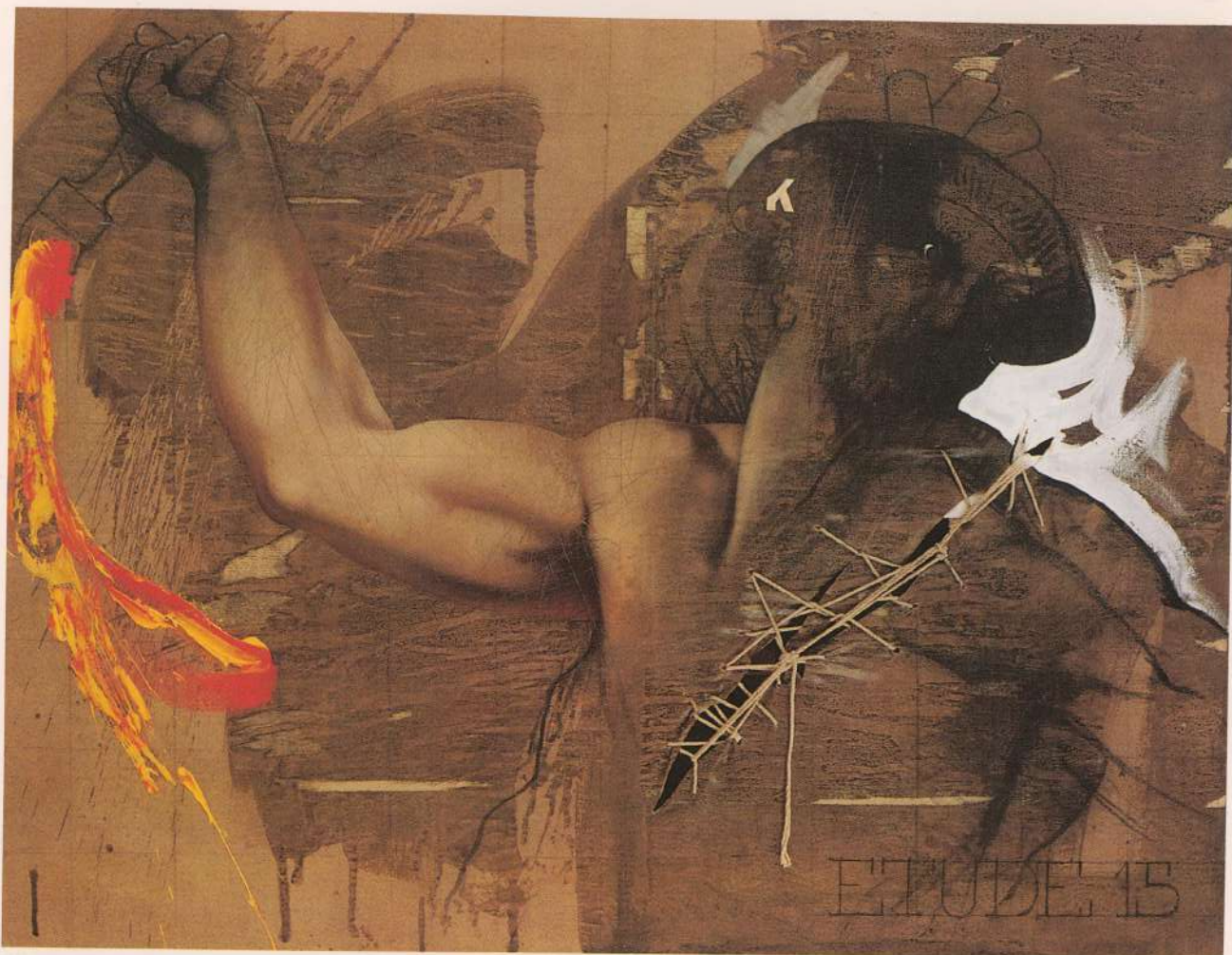
MESURAS 1988
146x114cm
Coleção Roléa



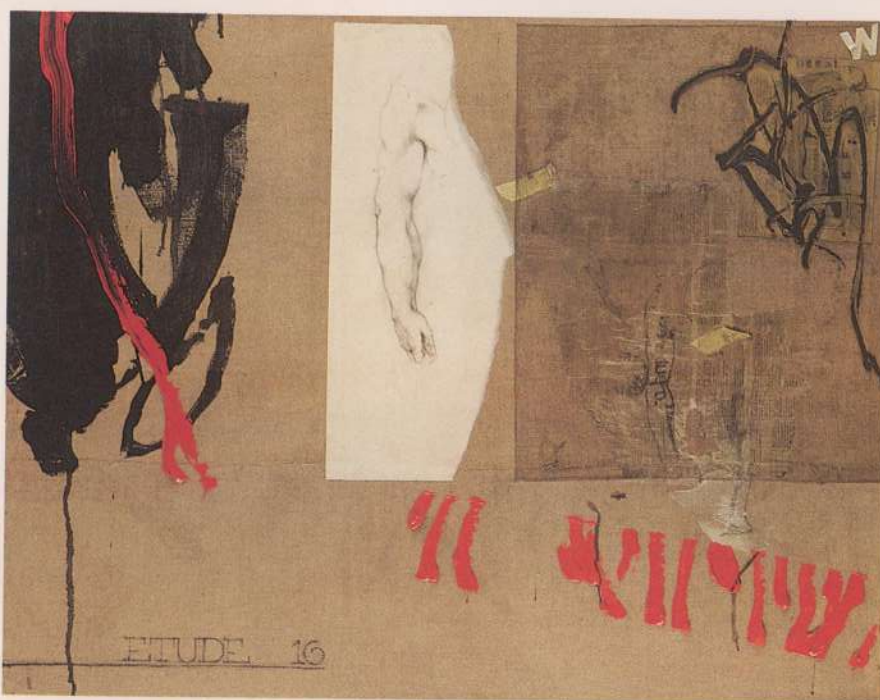
VAN GOGH TRABALHANDO 1988
97x130cm
Coleção Pain



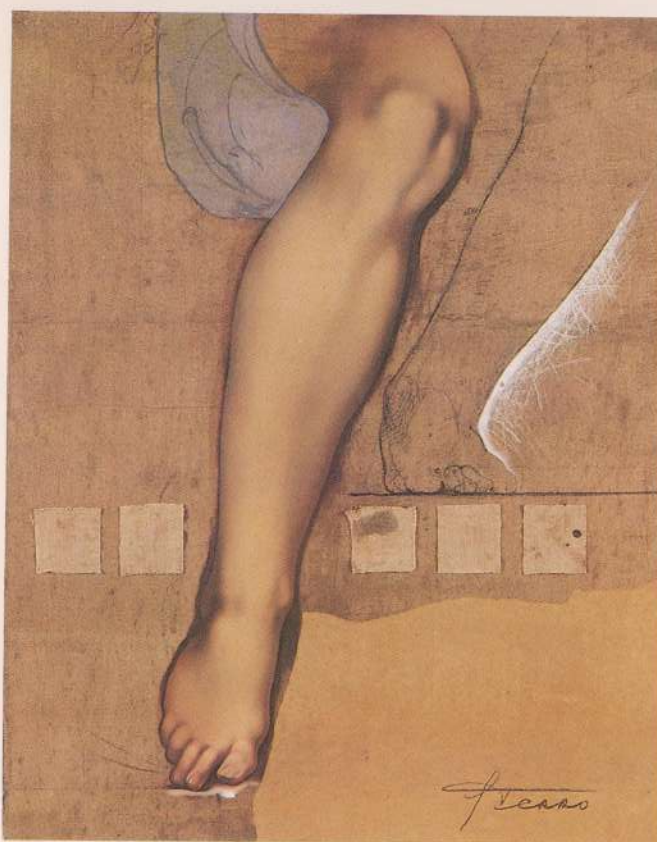
"MAIS, QUE VEUX-TU?..." 1988
129x161 cm
Coleção Willian Frank



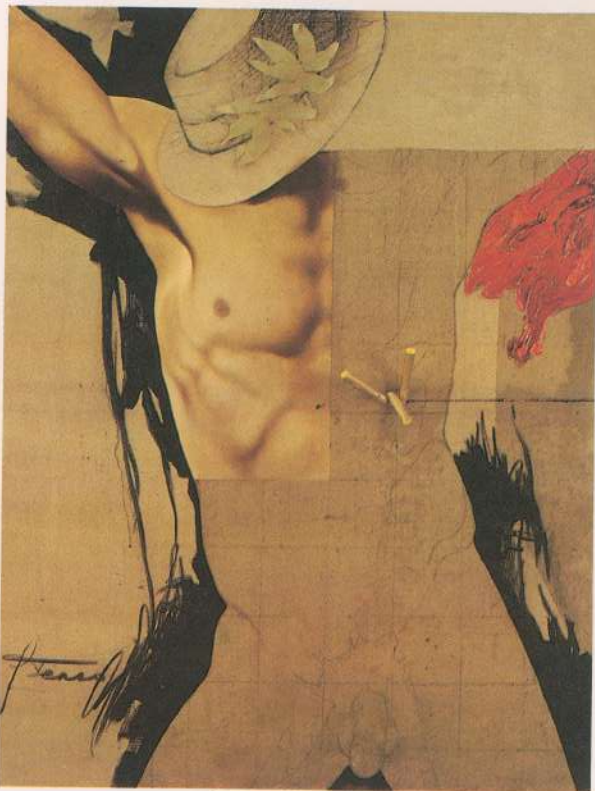
ESTUDO Nº 15 1988
97x130cm
Coleção Detrait



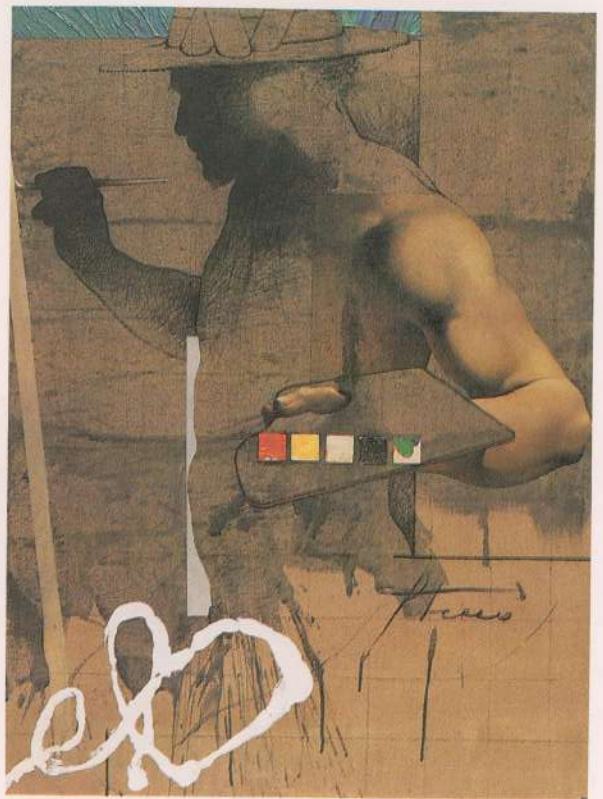
ESTUDO Nº 16 1988
75x96cm
Coleção Particular



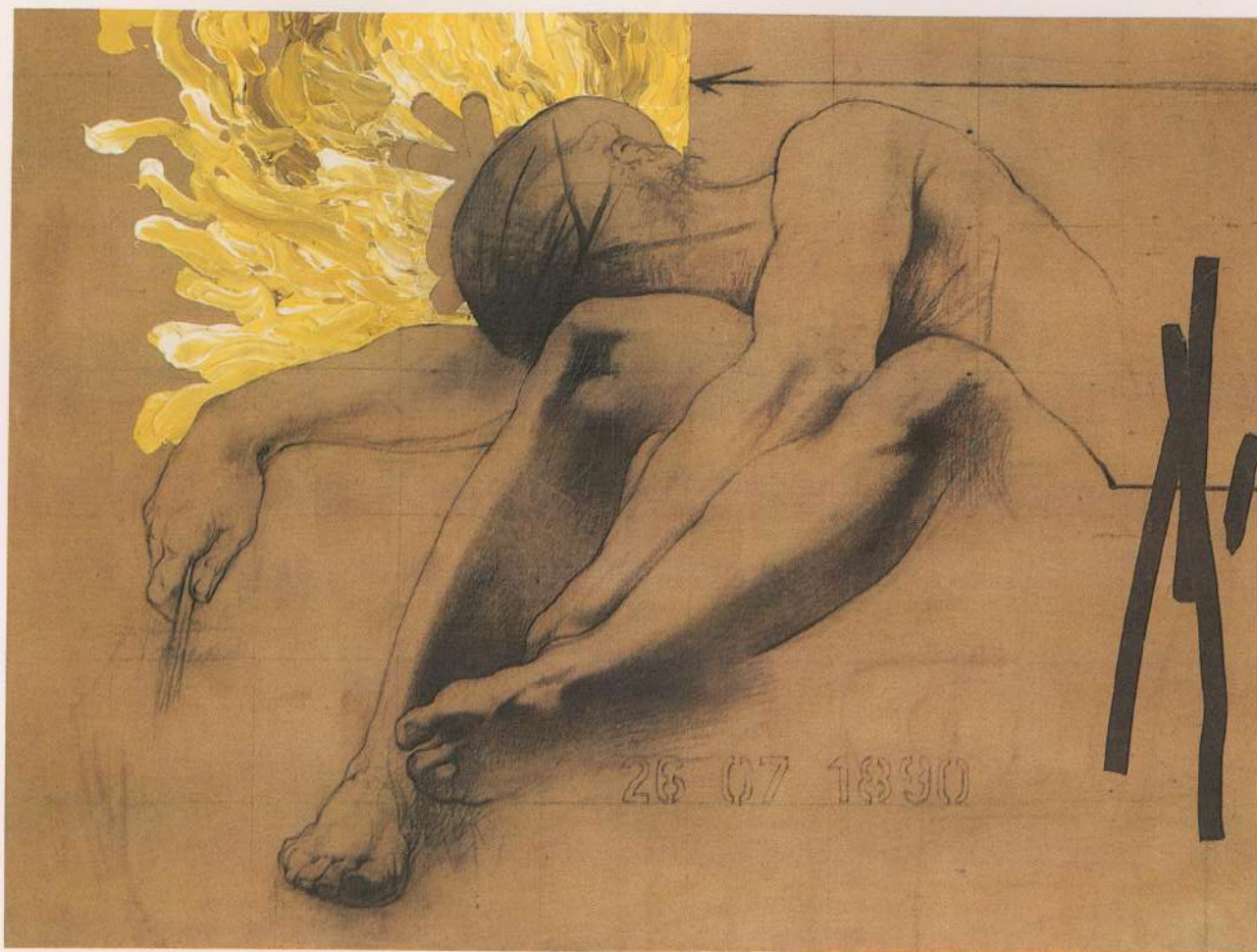
MADONA 1988
92x73cm
Coleção Particular



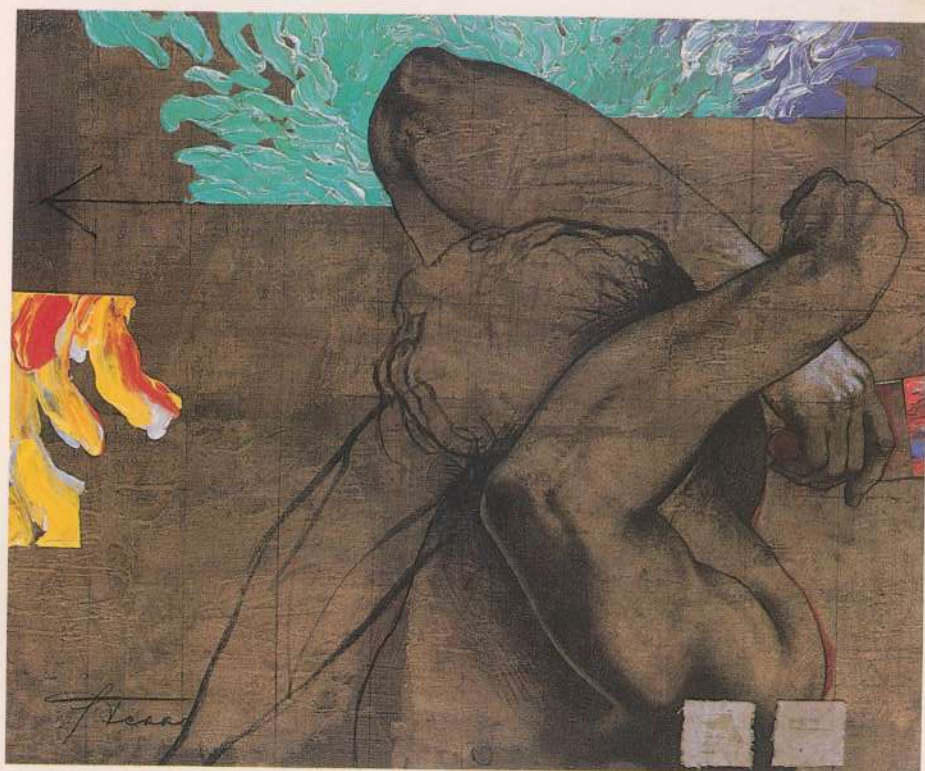
SÃO SEBASTIÃO DO RIO DE JANEIRO 1988
100x81cm
Coleção Particular



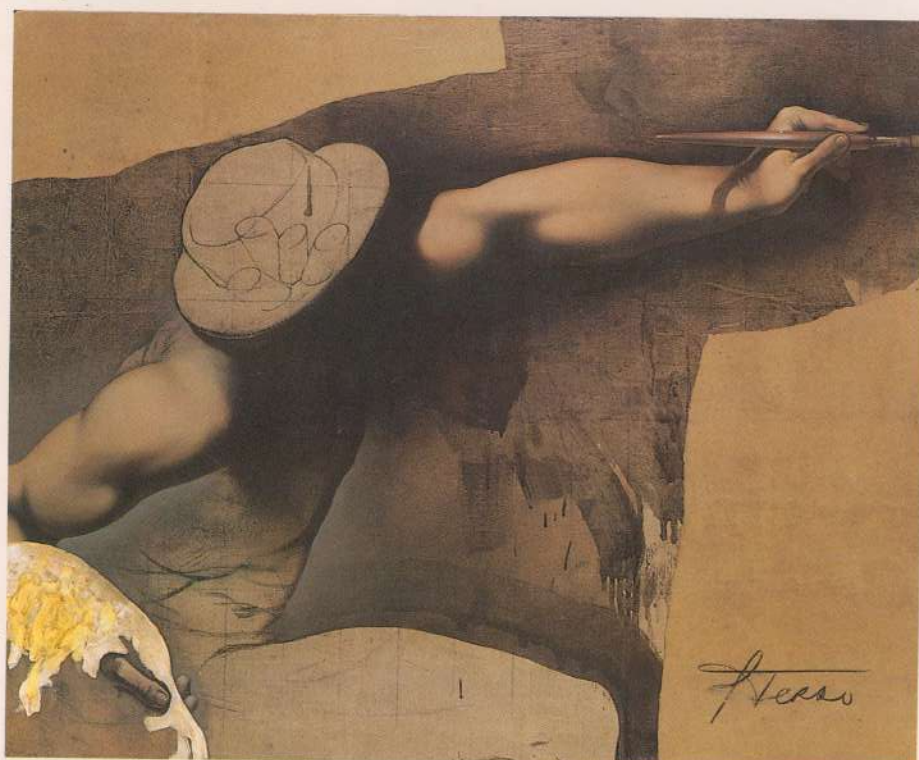
VAN GOGH NO ATELIER Nº 2 1989
146x114cm
Coleção Caudron



"26 DE JULHO DE 1890" 1989
81x100cm
Coleção Maître Rodriguez



"JE VEUX!" 1989
81x100cm
Coleção Particular



VAN GOGH PINTANDO NO BORINAGE 1989
130x162cm
Coleção Particular